

Z. L. ROBWAY / RCI-1550

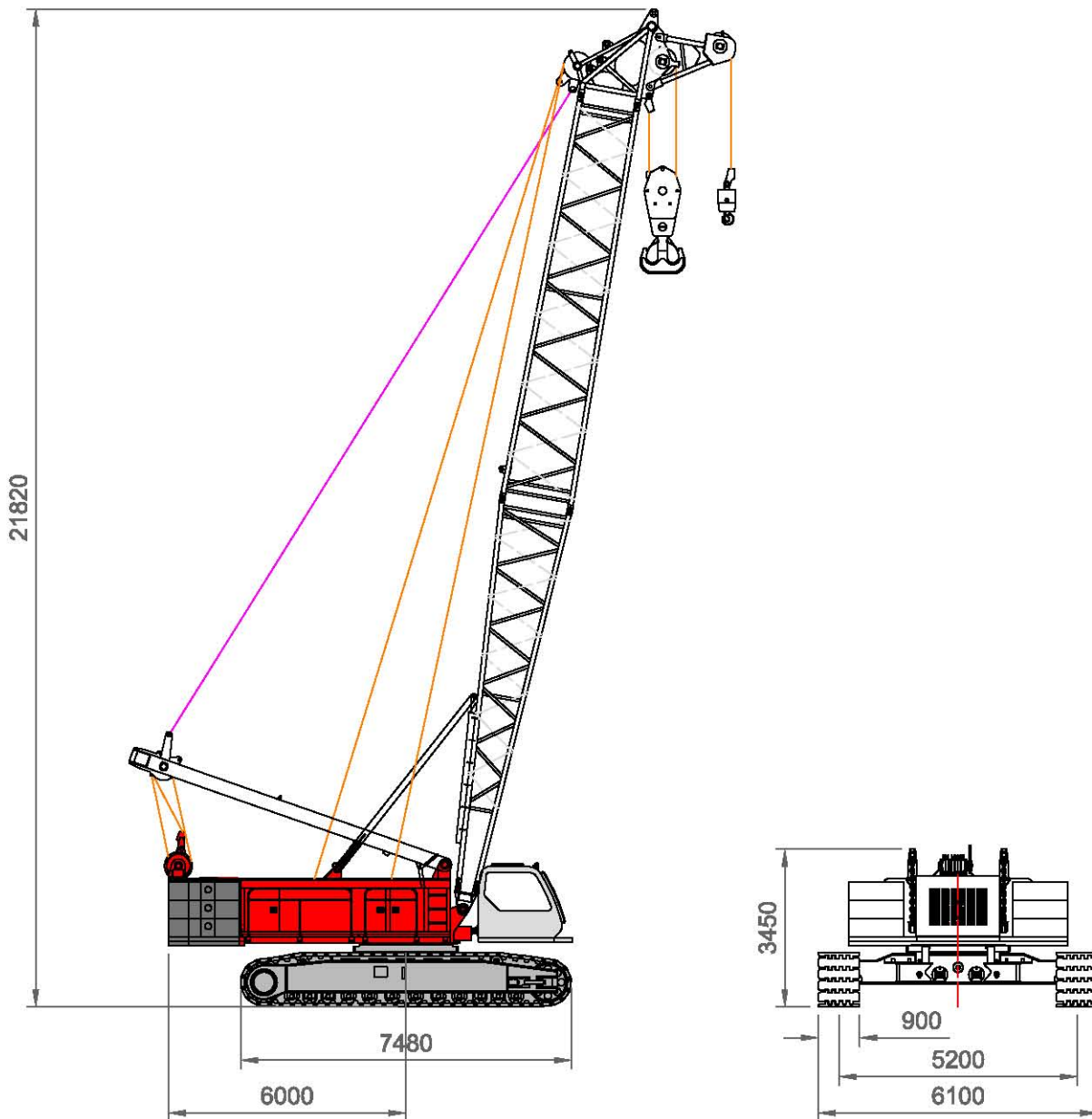
Unit 888 - 100T crawler crane



Crane Dimensions



Unit 888 - 100T crawler crane



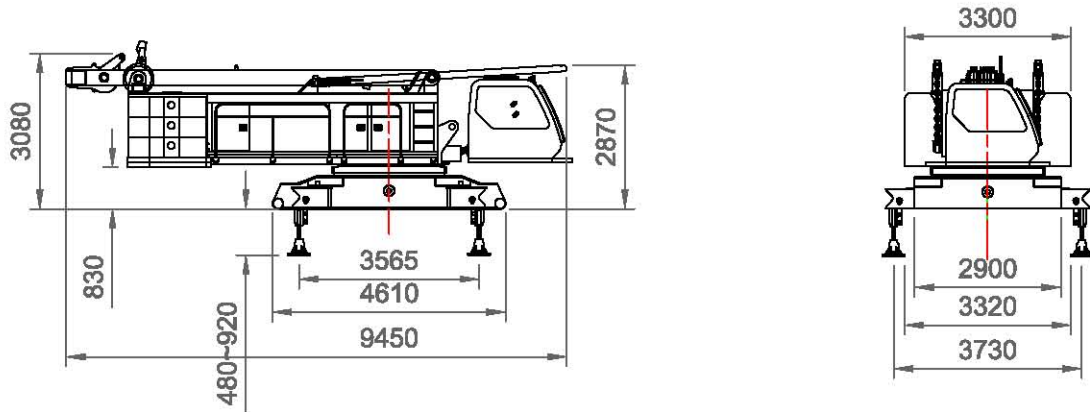
Max. lifting capacity: 100t / 5m
Self weight with basic boom: 110t
Boom length: 19-73m
Max. length of boom + fixed jib: 61+31m
Max. length of boom + tower jib: 55+51m
Main machine: 36t

Crane Dimensions

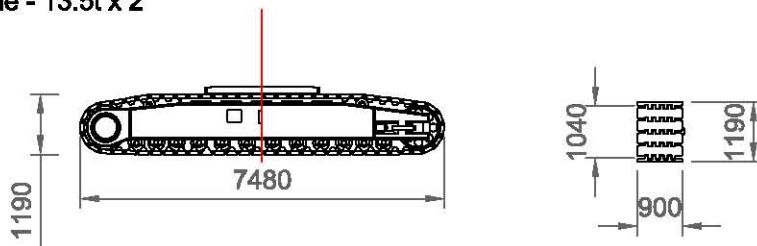


Unit 888 - 100T crawler crane

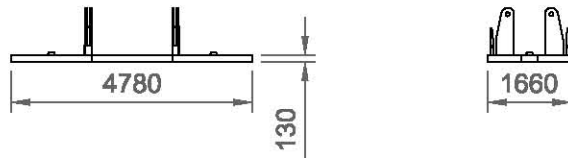
Carbody 36t



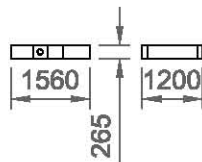
Track frame - 13.5t x 2



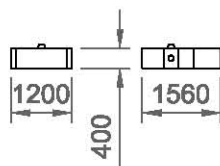
Counterweight bottom plate - 7.8t



Counterweight - 4.45t x 6



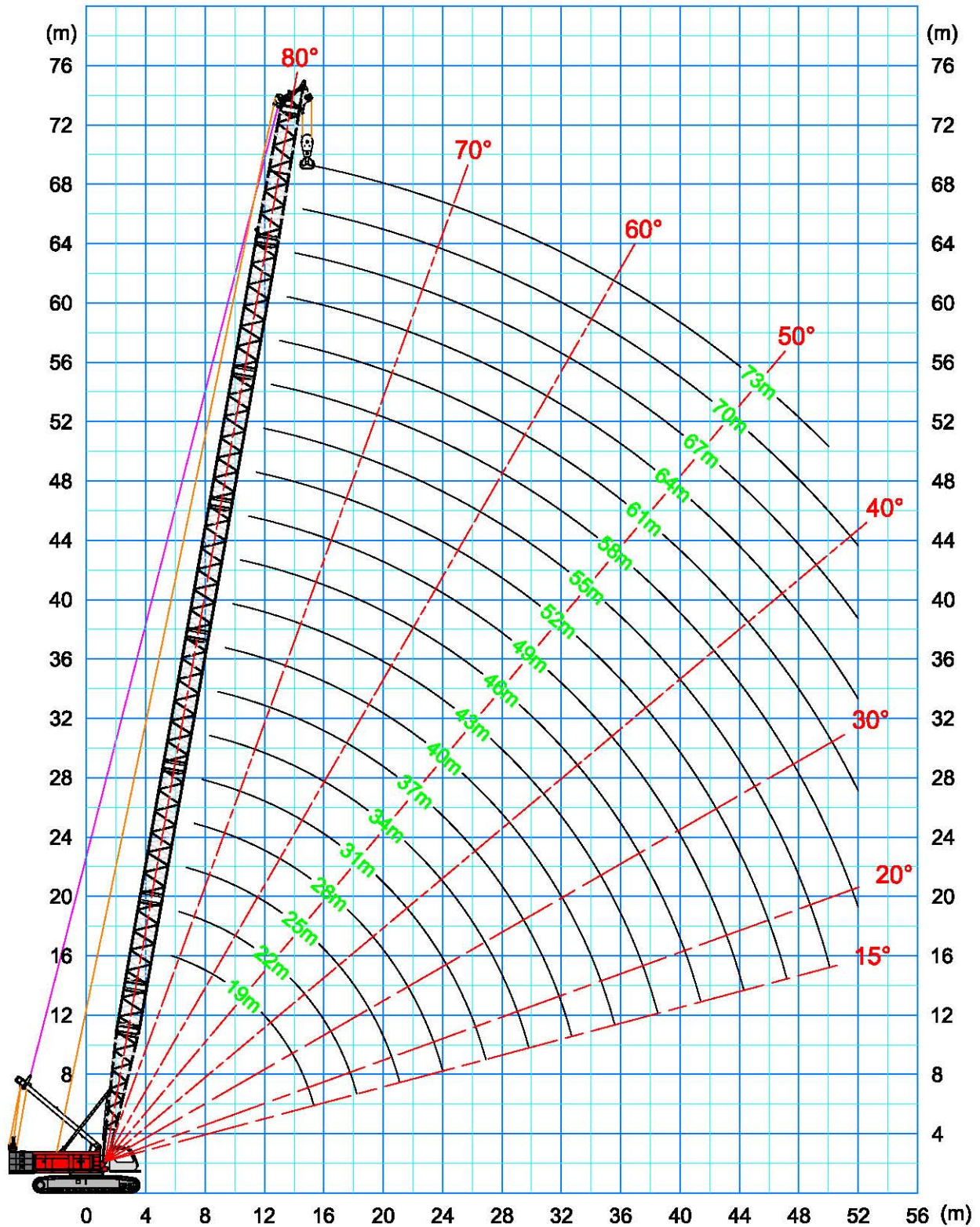
Counterweight - 6.4t x 2



Main boom range diagram



Unit 888 - 100T crawler crane with main boom



Main boom load charts



Unit 888 - 100T crawler crane with main boom

Main boom configuration

	Length	Number of boom sections																		
Boom head	10m	1	1	1	1	1	1	1	1	1	1	1	1	1	1	1	1	1	1	
Boom insert	3m		1	2	1	2	1	1	2	1	1	2	1	1	2	1	1	2	1	
Boom insert	6m				1	1	2	1	1	2	1	1	2	1	1	2	1	1	2	
Boom insert	9m							1	1	1	2	2	2	3	3	3	4	4	4	
Boom foot	9m	1	1	1	1	1	1	1	1	1	1	1	1	1	1	1	1	1	1	
Boom length (m)		19	22	25	28	31	34	37	40	43	46	49	52	55	58	61	64	67	70	73

Main boom load charts

47.3t counterweight + 36t carbody counterweight		360° Rating								
Radius (m)	Boom length									
	19m	22m	25m	28m	31m	34m	37m	40m	43m	
5.0	100.0	90 / 5.5m								
6.0	92.0	90.0	80.0	70 / 6.2m	61 / 6.8m					
7.0	78.9	78.0	76.8	70.0	61.0	60 / 7.3m	52 / 7.8m			
8.0	65.7	65.0	65.0	64.0	60.5	57.5	52.0	46.0 / 8.4m		
9.0	56.2	55.1	54.6	54.3	54.2	53.7	50.2	45.7	40.0	
10.0	48.8	48.2	47.3	46.6	46.4	44.8	46.3	44.3	40.0	
12.0	38.0	37.8	37.6	37.1	36.4	35.8	35.8	35.5	35.4	
14.0	31.1	30.9	30.7	30.4	30.2	29.7	29.2	28.6	28.4	
16.0	26.2	26.0	25.8	25.5	25.3	25.1	24.8	24.3	23.9	
18.0	22.6	22.4	22.1	21.9	21.7	21.5	21.2	21.0	20.6	
20.0		19.6	19.4	19.1	18.9	18.7	18.4	18.2	18.0	
22.0			17.1	16.9	16.7	16.5	16.2	16.0	15.8	
24.0			15.3	15.1	14.9	14.7	14.4	14.2	14.0	
26.0				13.6	13.4	13.2	12.9	12.7	12.5	
28.0					12.1	11.9	11.7	11.4	11.2	
30.0						10.8	10.6	10.4	10.1	
32.0						9.9	9.7	9.4	9.2	
34.0							8.9	8.6	8.4	
36.0								7.9	7.7	
38.0									7.0	
40.0									6.5	

Note: Above load chart is for reference only. Always refer to complete chart for actual lift study.

Main boom load charts



Unit 888 - 100T crawler crane with main boom

Main boom configuration

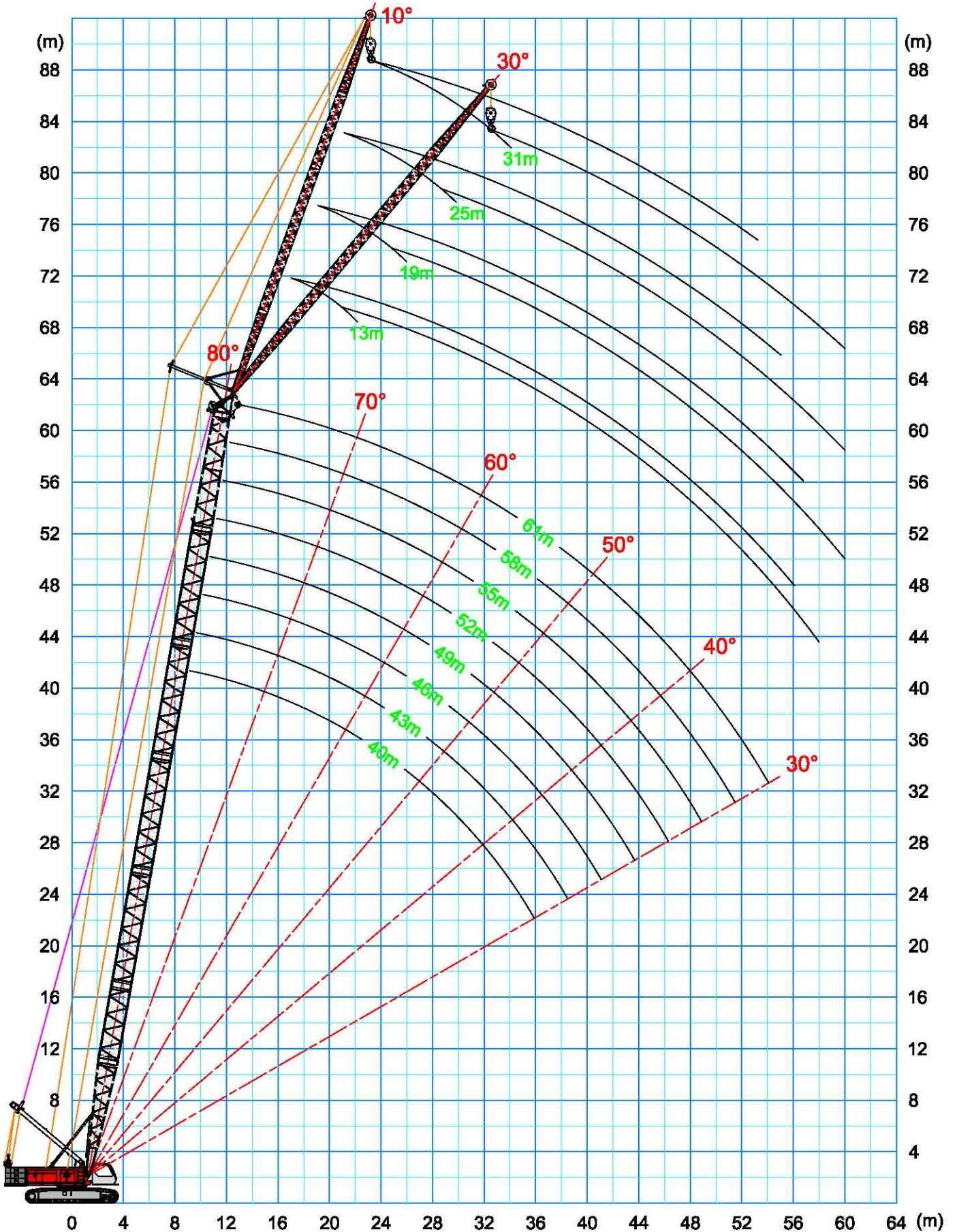
47.3t counterweight + 36t carbody counterweight										360°
Radius (m)	Boom length									
	46m	49m	52m	55m	58m	61m	64m	67m	70m	73m
9.0	40.0 / 9.4m									
10.0	40.0	35 / 10.5m	30 / 11.0m	30 / 11.5m						
12.0	35.3	35.0	30.0	30.0	25.9	20.0	20 / 12.5m	20 / 13.0m		
14.0	28.4	28.2	28.2	26.7	25.0	20.0	20.0	20.0	20 / 13.0m	18.0
16.0	23.6	23.4	23.3	23.2	23.0	20.0	20.0	20.0	18.0	16.7
18.0	20.2	20.0	19.8	19.6	19.4	19.4	19.2	18.0	17.7	15.9
20.0	17.7	17.4	17.3	17.0	16.6	16.6	16.5	16.3	15.3	15.0
22.0	15.5	15.3	15.1	14.9	14.6	14.4	14.3	14.1	13.9	13.0
24.0	13.7	13.5	13.3	13.0	12.8	12.6	12.5	12.3	12.1	11.9
26.0	12.2	12.0	11.8	11.5	11.3	11.2	11.0	10.8	10.6	10.4
28.0	11.0	10.7	10.5	10.3	10.0	9.9	9.8	9.6	9.4	9.2
30.0	9.9	9.7	9.4	9.2	9.0	8.9	8.7	8.5	8.3	8.1
32.0	9.0	8.7	8.5	8.3	8.0	8.0	7.8	7.6	7.4	7.2
34.0	8.1	7.9	7.7	7.5	7.2	7.2	7.0	6.8	6.6	6.4
36.0	7.4	7.2	7.0	6.8	6.5	6.5	6.3	6.1	5.9	5.7
38.0	6.8	6.6	6.3	6.2	5.9	5.9	5.7	5.5	5.3	5.0
40.0	6.2	6.0	5.8	5.6	5.4	5.3	5.1	4.9	4.6	4.3
42.0	5.7	5.5	5.3	5.1	4.9	4.8	4.6	4.3	4.1	3.6
44.0		5.0	4.8	4.7	4.4	4.3	4.1	3.8	3.5	3.1
46.0			4.4	4.3	4.0	3.8	3.6	3.2	3.1	2.7
48.0				3.7	3.5	3.4	3.2	2.9	2.6	2.4
50.0				3.4	3.2	3.0	2.8	2.9	2.3	2.1
52.0					2.8	2.6	2.4	2.2	2.0	

Note: Above load chart is for reference only. Always refer to complete chart for actual lift study.

Fixed jib range diagram



Unit 888 - 100T crawler crane with fixed jib on main boom



Scale: 1:400@A4

Fixed jib load charts



Unit 888 - 100T crawler crane with fixed jib on main boom

Main boom 40m

Radius (m)	10° offset				30° offset			
	Jib 13m	Jib 19m	Jib 25m	Jib 31m	Jib 13m	Jib 19m	Jib 25m	Jib 31m
12.0	11.0	11.0 / 13.7m						
14.0	11.0	11.0	9.7 / 15.7m		10.3 / 15.6m			
16.0	11.0	11.0	9.5	6.7 / 17.5m	10.3			
18.0	11.0	11.0	9.3	6.6	10.3	10.3 / 19.3m		
20.0	11.0	11.0	9.1	6.4	10.3	10.3		
22.0	11.0	11.0	8.9	6.3	10.3	10.3	8.2 / 23m	
24.0	11.0	11.0	8.7	6.1	10.3	10.3	8.2	
26.0	11.0	11.0	8.5	6.0	10.3	10.3	8.0	5.1 / 26.7m
28.0	10.3	10.3	8.3	5.8	10.3	10.3	7.9	4.9
30.0	10.3	10.3	8.2	5.7	10.3	10.3	7.8	4.8
32.0	9.8	9.9	8.0	5.6	10.0	10.3	7.7	4.6
34.0	8.9	9.1	7.8	5.4	9.2	9.5	7.5	4.4
36.0	8.2	8.3	7.3	5.3	8.4	8.7	7.4	4.3
38.0	7.5	7.7	6.8	5.2	7.7	8.0	7.3	4.2
40.0	7.0	7.1	6.4	5.1	7.1	7.4	7.3	4.1
42.0	6.4	6.6	6.3	4.9	6.6	6.8	7.1	3.9
44.0	6.0	6.1	6.2	4.7	6.1	6.3	6.5	3.8
46.0	5.5	5.7	5.7	4.5	5.6	5.9	6.1	3.7
48.0	5.1	5.3	5.3	4.3	5.2	5.4	5.6	3.7
50.0		4.9	5.0	4.2		5.0	5.2	3.6
52.0		4.6	4.6	4.0		4.7	4.9	3.5
54.0		4.3	4.3	3.7		4.3	4.5	3.4
56.0			4.0	3.4			4.2	3.4
58.0			3.7	3.2			3.9	3.3
60.0				3.0				3.2

Main boom 43m

Radius (m)	10° offset				30° offset			
	Jib 13m	Jib 19m	Jib 25m	Jib 31m	Jib 13m	Jib 19m	Jib 25m	Jib 31m
12.0	11.0 / 12.3m							
14.0	11.0	11.0						
16.0	11.0	11.0	9.5	6.7 / 17.5m	10.3			
18.0	11.0	11.0	9.3	6.6	10.3	10.3 / 19.7m		
20.0	11.0	11.0	9.1	6.5	10.3	10.3		
22.0	11.0	11.0	9.0	6.3	10.3	10.3	8.2 / 23.4m	
24.0	11.0	11.0	8.8	6.2	10.3	10.3	8.2	
26.0	11.0	11.0	8.6	6.0	10.3	10.3	8.1	5.1 / 27.1m
28.0	10.3	10.3	8.4	5.9	10.3	10.3	8.0	5.0
30.0	10.3	10.3	8.3	5.8	10.3	10.3	7.8	4.8
32.0	9.5	9.7	8.1	5.6	9.9	10.2	7.7	4.7
34.0	8.7	8.9	7.8	5.5	9.0	9.3	7.6	4.5
36.0	8.0	8.1	7.2	5.4	8.2	8.6	7.5	4.4
38.0	7.3	7.5	6.6	5.3	7.6	7.9	7.4	4.2
40.0	6.7	6.9	6.5	5.1	6.9	7.2	7.3	4.1
42.0	6.2	6.4	6.3	5.0	6.4	6.7	6.9	4.0
44.0	5.7	5.9	6.0	4.8	5.9	6.2	6.4	3.9
46.0	5.3	5.5	5.6	4.6	5.4	5.7	5.9	3.8
48.0	4.9	5.1	5.2	4.4	5.0	5.3	5.5	3.7
50.0	4.6	4.7	4.8	4.1	4.6	4.9	5.1	3.6
52.0	4.2	4.4	4.5	3.8		4.5	4.7	3.6
54.0	3.9	4.0	4.1	3.5		4.2	4.4	3.5
56.0		3.8	3.9	3.2		3.9	4.1	3.4
58.0			3.6	3.0			3.8	3.3
60.0				2.8			3.5	3.0

Note: Above load chart is for reference only. Always refer to complete chart for actual lift study.

Fixed jib load charts



Unit 888 - 100T crawler crane with fixed jib on main boom

Main boom 46m

Radius (m)	10° offset				30° offset			
	Jib 13m	Jib 19m	Jib 25m	Jib 31m	Jib 13m	Jib 19m	Jib 25m	Jib 31m
12.0	11.0 / 12.7m							
14.0	11.0	11.0 / 14.5m	9.7 / 16.4m					
16.0	11.0	11.0	9.6		10.3 / 16.5m			
18.0	11.0	11.0	9.4	6.7	10.3			
20.0	11.0	11.0	9.2	6.5	10.3	10.3 / 20.1m		
22.0	11.0	11.0	9.0	6.4	10.3	10.3	8.3 / 23.8m	
24.0	11.0	11.0	8.8	6.2	10.3	10.3	8.3	
26.0	11.0	11.0	8.7	6.1	10.3	10.3	8.1	5.1 / 27.5m
28.0	10.3	10.3	8.5	5.9	10.3	10.3	8.0	5.0
30.0	10.3	10.3	8.3	5.8	10.3	10.3	7.9	4.9
32.0	9.3	9.5	8.2	5.7	9.7	10.1	7.8	4.7
34.0	8.5	8.7	7.6	5.6	8.8	9.2	7.7	4.6
36.0	7.8	7.9	7.0	5.4	8.1	8.4	7.6	4.4
38.0	7.1	7.3	6.7	5.3	7.4	7.7	7.5	4.3
40.0	6.5	6.7	6.6	5.2	6.8	7.1	7.3	4.2
42.0	6.0	6.2	6.3	5.1	6.2	6.5	6.8	4.1
44.0	5.5	5.7	5.8	5.0	5.7	6.0	6.2	4.0
46.0	5.1	5.3	5.4	4.6	5.3	5.5	5.8	3.9
48.0	4.7	4.9	5.0	4.2	4.8	5.1	5.3	3.8
50.0	4.3	4.5	4.6	3.9	4.4	4.7	4.9	3.7
52.0	4.0	4.2	4.3	3.6	4.1	4.3	4.6	3.6
54.0		3.8	4.0	3.3	3.8	4.0	4.2	3.5
56.0		3.6	3.7	3.1		3.7	3.9	3.4
58.0		3.3	3.4	2.8		3.4	3.6	3.1
60.0				2.6			3.3	2.9

Main boom 49m

Radius (m)	10° offset				30° offset			
	Jib 13m	Jib 19m	Jib 25m	Jib 31m	Jib 13m	Jib 19m	Jib 25m	Jib 31m
12.0	11.0 / 13.0m							
14.0	11.0	11.0 / 14.9m	9.7 / 16.8m					
16.0	11.0	11.0	9.6	6.7 / 18.6m	10.3 / 16.9m			
18.0	11.0	11.0	9.4	6.7	10.3			
20.0	11.0	11.0	9.3	6.6	10.3	10.3 / 20.6m		
22.0	11.0	11.0	9.1	6.4	10.3	10.3		
24.0	11.0	11.0	8.9	6.3	10.3	10.3	8.3 / 24.3m	
26.0	10.3	11.0	8.7	6.1	10.3	10.3	8.2	
28.0	10.3	10.3	8.6	6.0	10.3	10.3	8.0	
30.0	10.1	10.3	8.4	5.9	10.3	10.3	7.9	5.1
32.0	9.1	9.3	8.0	5.7	9.5	9.9	7.8	4.9
34.0	8.3	8.5	7.3	5.6	8.7	9.0	7.7	4.8
36.0	7.5	7.7	7.2	5.5	7.9	8.2	7.6	4.6
38.0	6.9	7.1	7.0	5.4	7.2	7.5	7.5	4.5
40.0	6.3	6.5	6.6	5.3	6.6	6.9	7.2	4.4
42.0	5.8	6.0	6.1	5.2	6.0	6.3	6.6	4.2
44.0	5.3	5.5	5.6	4.8	5.5	5.8	6.1	4.1
46.0	4.9	5.0	5.2	4.4	5.1	5.4	5.6	4.0
48.0	4.5	4.6	4.8	4.1	4.6	4.9	5.2	3.9
50.0	4.1	4.3	4.4	3.7	4.3	4.5	4.8	3.8
52.0	3.8	3.9	4.1	3.4	3.9	4.2	4.4	3.8
54.0	3.5	3.6	3.8	3.1	3.6	3.8	4.1	3.7
56.0	3.2	3.3	3.5	2.9	3.3	3.5	3.7	3.5
58.0		3.1	3.2	2.6		3.2	3.4	3.2
60.0			2.9	2.4		2.9	3.2	3.0

Note: Above load chart is for reference only. Always refer to complete chart for actual lift study.

Fixed jib load charts



Unit 888 - 100T crawler crane with fixed jib on main boom

Main boom 52m

Radius (m)	10° offset				30° offset			
	Jib 13m	Jib 19m	Jib 25m	Jib 31m	Jib 13m	Jib 19m	Jib 25m	Jib 31m
12.0	11.0 / 13.3m							
14.0	11.0	11.0 / 15.2m						
16.0	11.0	11.0	9.7 / 17.0m		10.3 / 17.3m			
18.0	11.0	11.0	9.5	6.7 / 18.8m	10.3			
20.0	11.0	11.0	9.3	6.6	10.3	10.3 / 21.0m		
22.0	11.0	11.0	9.1	6.4	10.3	10.3	8.3 / 24.7m	
24.0	11.0	11.0	9.0	6.3	10.3	10.3	8.3	
26.0	10.3	10.3	8.8	6.2	10.3	10.3	8.2	
28.0	10.3	10.3	8.6	6.1	10.3	10.3	8.1	5.1 / 28.4m
30.0	9.9	10.1	8.5	5.9	10.3	10.3	8.0	5.0
32.0	8.9	9.1	8.0	5.8	9.4	9.8	7.8	4.8
34.0	8.1	8.3	7.3	5.7	8.5	8.9	7.7	4.7
36.0	7.3	7.5	6.6	5.6	7.7	8.1	7.6	4.5
38.0	6.7	6.9	6.5	5.5	7.0	7.4	7.6	4.4
40.0	6.1	6.3	6.4	5.4	6.4	6.7	7.0	4.3
42.0	5.6	5.8	5.9	5.1	5.8	6.2	6.5	4.2
44.0	5.1	5.3	5.4	4.6	5.3	5.7	5.9	4.1
46.0	4.7	4.8	5.0	4.2	4.9	5.2	5.5	4.0
48.0	4.3	4.4	4.6	3.9	4.5	4.8	5.0	3.9
50.0	3.9	4.1	4.2	3.5	4.1	4.4	4.6	3.8
52.0	3.6	3.7	3.9	3.2	3.7	4.0	4.2	3.7
54.0	3.3	3.4	3.5	2.9	3.4	3.7	3.9	3.4
56.0	3.0	3.1	3.3	2.7	3.1	3.3	3.6	3.1
58.0	2.7	2.9	3.0	2.4	2.8	3.0	3.3	2.8
60.0			2.7	2.2			3.0	2.6

Main boom 55m

Radius (m)	10° offset				30° offset			
	Jib 13m	Jib 19m	Jib 25m	Jib 31m	Jib 13m	Jib 19m	Jib 25m	Jib 31m
12.0	11.0 / 13.3m							
14.0	11.0	11.0 / 15.2m						
16.0	11.0	11.0	9.7 / 17.0m		10.3 / 17.7m			
18.0	11.0	11.0	9.5	6.7 / 18.8m	10.3			
20.0	11.0	11.0	9.3	6.6	10.3	10.3 / 21.4m		
22.0	11.0	11.0	9.1	6.4	10.3	10.3		
24.0	11.0	11.0	9.0	6.3	10.3	10.3	8.2 / 25.1m	
26.0	10.3	10.3	8.8	6.2	10.3	10.3	8.2	
28.0	10.3	10.3	8.6	6.1	10.3	10.3	8.1	5.1 / 28.6m
30.0	9.9	10.1	8.5	5.9	10.2	10.3	8.0	5.1
32.0	8.9	9.1	8.0	5.8	9.2	9.6	7.9	5.0
34.0	8.1	8.3	7.3	5.7	8.3	8.7	7.8	4.8
36.0	7.3	7.5	6.6	5.6	7.5	7.9	7.7	4.7
38.0	6.7	6.9	6.5	5.5	6.8	7.2	7.6	4.6
40.0	6.1	6.3	6.4	5.4	6.2	6.6	6.9	4.5
42.0	5.6	5.8	5.9	5.1	5.6	6.0	6.3	4.3
44.0	5.1	5.3	5.4	4.6	5.1	5.5	5.8	4.2
46.0	4.7	4.8	5.0	4.2	4.7	5.0	5.3	4.1
48.0	4.3	4.4	4.6	3.9	4.3	4.6	4.9	4.0
50.0	3.9	4.1	4.2	3.5	3.9	4.2	4.5	3.9
52.0	3.6	3.7	3.9	3.2	3.5	3.8	4.1	3.9
54.0	3.3	3.4	3.5	2.9	3.2	3.5	3.7	3.6
56.0	3.0	3.1	3.3	2.7	2.9	3.2	3.4	3.2
58.0	2.7	2.9	3.0	2.4	2.6	2.9	3.1	2.9
60.0			2.7	2.2	2.4	2.6	2.8	2.7

Note: Above load chart is for reference only. Always refer to complete chart for actual lift study.

Fixed jib load charts



Unit 888 - 100T crawler crane with fixed jib on main boom

Main boom 58m

Radius (m)	10° offset				30° offset			
	Jib 13m	Jib 19m	Jib 25m	Jib 31m	Jib 13m	Jib 19m	Jib 25m	Jib 31m
12.0								
14.0	11.0 / 14.1m							
16.0	11.0	11.0	9.7 / 17.8m					
18.0	11.0	11.0	9.6	6.7 / 19.7m	10.3 / 18.1m			
20.0	11.0	11.0	9.4	6.7	10.3	10.3 / 21.8m		
22.0	11.0	11.0	9.2	6.5	10.3	10.3		
24.0	11.0	11.0	9.1	6.4	10.3	10.3	8.2 / 25.5m	
26.0	10.3	10.3	8.9	6.3	10.3	10.3	8.2	
28.0	10.3	10.3	8.8	6.1	10.3	10.3	8.1	5.1 / 29.2m
30.0	9.5	9.7	8.3	6.0	10.0	10.3	8.0	5.0
32.0	8.5	8.7	7.5	5.9	9.0	9.5	7.9	4.9
34.0	7.7	7.9	6.8	5.8	8.1	8.6	7.8	4.7
36.0	6.9	7.1	6.6	5.7	7.3	7.8	7.7	4.6
38.0	6.3	6.5	6.4	5.6	6.6	7.0	7.4	4.5
40.0	5.7	5.9	6.0	5.2	6.0	6.4	6.8	4.4
42.0	5.1	5.3	5.5	4.7	5.5	5.8	6.2	4.3
44.0	4.7	4.9	5.0	4.3	5.0	5.3	5.6	4.2
46.0	4.2	4.4	4.6	3.9	4.5	4.8	5.1	4.1
48.0	3.8	4.0	4.2	3.5	4.1	4.4	4.7	4.0
50.0	3.5	3.6	3.8	3.1	3.7	4.0	4.3	3.8
52.0	3.1	3.3	3.5	2.8	3.3	3.6	3.9	3.4
54.0	2.8	3.0	3.1	2.5	3.0	3.3	3.6	3.1
56.0	2.5	2.7	2.8	2.3	2.7	3.0	3.2	2.8
58.0	2.3	2.4	2.6	2.0	2.5	2.7	2.9	2.5
60.0		2.2	2.3	1.8	2.2	2.5	2.7	2.2

Main boom 61m

Radius (m)	10° offset				30° offset			
	Jib 13m	Jib 19m	Jib 25m	Jib 31m	Jib 13m	Jib 19m	Jib 25m	Jib 31m
12.0								
14.0	11.0 / 14.5m							
16.0	11.0	11.0 / 16.4m						
18.0	11.0	11.0	9.6 / 18.3m	6.7 / 19.1m	10.3 / 18.5m			
20.0	11.0	11.0	9.5	6.7	10.3	10.3 / 22.2m		
22.0	11.0	11.0	9.3	6.6	10.3	10.3		
24.0	11.0	11.0	9.1	6.4	10.3	10.3		
26.0	10.3	10.3	9.0	6.3	10.3	10.3	7.7	
28.0	10.3	10.3	8.8	6.2	10.3	10.3	7.6	5.1 / 29.6m
30.0	9.2	9.5	8.0	6.1	9.8	10.3	7.5	5.1
32.0	8.3	8.5	7.3	6.0	8.8	9.3	7.4	4.9
34.0	7.4	7.7	6.8	5.8	7.9	8.4	7.3	4.8
36.0	6.7	6.9	6.6	5.7	7.2	7.6	6.8	4.7
38.0	6.0	6.3	6.5	5.5	6.5	6.9	6.2	4.5
40.0	5.4	5.7	5.8	5.0	5.8	6.2	5.6	4.4
42.0	4.9	5.1	5.3	4.5	5.3	5.7	5.1	4.3
44.0	4.4	4.6	4.8	4.1	4.8	5.1	4.6	4.2
46.0	4.0	4.2	4.4	3.7	4.3	4.7	4.1	4.1
48.0	3.6	3.8	4.0	3.3	3.9	4.2	3.7	4.0
50.0	3.2	3.4	3.6	2.9	3.5	3.8	3.4	3.6
52.0	2.9	3.1	3.3	2.6	3.1	3.5	3.0	3.3
54.0	2.6	2.8	2.9	2.3	2.8	3.1	2.7	2.9
56.0	2.3	2.5	2.6	2.1	2.6	2.8	2.4	2.6
58.0	2.0	2.2	2.4	1.8	2.3	2.6	2.1	2.3
60.0		2.0	2.1	1.6	2.1	2.3	1.8	2.1

Note: Above load chart is for reference only. Always refer to complete chart for actual lift study.